



# Historic Births, Deaths, & Marriages

Online records in Australia

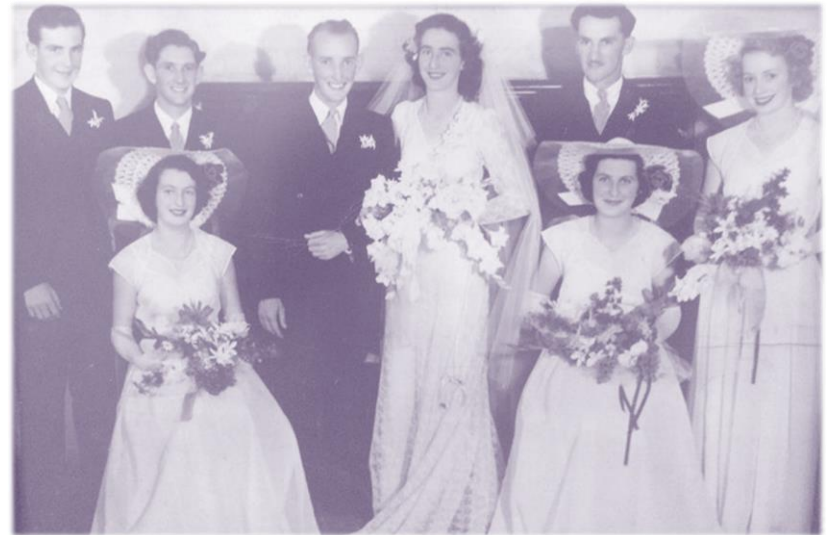
## Contact Us...

Phone: 02 69530945

Fax: 02 69535367

Email: [library@leeton.nsw.gov.au](mailto:library@leeton.nsw.gov.au)

Website: [www.leeton.nsw.gov.au/library](http://www.leeton.nsw.gov.au/library)



**Leeton Shire Library**  
Sycamore Street  
(Post to 23 Chelmsford Place)  
Leeton NSW 2705

**NSW** <http://www.bdm.nsw.gov.au>

- Registry records from **1856** to ...
  - **Births** - over 100 years ago
  - **deaths** - over 30 years ago
  - **marriages** - over 50 years ago
- Early church records (**1788 - 1855** baptism, marriage, burial)
- **\$46 or \$33.00 with registration number.**
- **Can order online**

**Vic** <http://www.bdm.vic.gov.au/>

- Records dating back to **1836**.
  - **Births** - **1853-1914**
  - **deaths** - **1853-1988**
  - **marriages** - **1853-1942**
- Early church records (**1836 - 1853** baptism, marriage, burial)
- The **Events at sea index** - births, marriages and deaths that happened between 1853 and 1920 onboard international and coastal ships bound for port in Victoria.
- **\$32.40 for an historical certificate or \$25.10** for an uncertified **image** of a certificate.

**Tas** <https://www.linc.tas.gov.au/family-history/>

- Registration began in **1839**
- INDEXES NOT AVAILABLE ONLINE
- Search and view many records including wills, inquests and birth, death and marriage records, church records for baptisms, weddings and funerals and cemetery records.

**WA** <http://www.bdm.dotag.wa.gov.au/>

- Registry records from **1841** to ...
  - **Births** - **100+ years ago**
  - **deaths** - **30+ years ago**
  - **marriages** - **75+ years ago**
- **\$35 for a mailed certificate.**

**Qld** <https://www.qld.gov.au/law/births-deaths-marriages-and-divorces/family-history-research/>

- **Births** : **1829 - 1918**
  - **deaths** : **1829 - 1988**
  - **marriages** : **1829 - 1943**
- Early church records (**1829 - 1856** baptism, burial. **1839 - 1856** marriage.)
- **\$30 for a certificate or \$21.40 for a scanned image.**
- **Can order online**

**SA** <http://www.genealogysa.org.au/resources/online-databases.html>

- Registry records from **1842** to ...
  - **Births** - **1928**
  - **deaths** - **1972**
  - **marriages** - **1937**
- Newspaper Birth Notices Index from **1960** onwards
- Newspaper Death Notices Index from **1972** onwards
- **\$24.20 for a transcription.**
- **Can order online**